

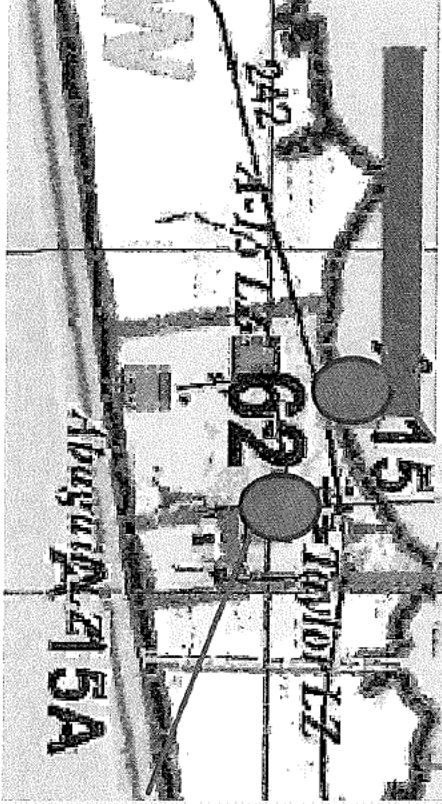
# RANGE CONTROL COMMUNICATION FLOW

PRC-152/Motorola Light Military Radio

1900 - Preparing boats, not co-located with aircrew  
 1930 - Relays all WX calls from DZ to [redacted] and Pilots via Motorola.

1930 - Relays from [redacted] who is in direct communication with pilots that the pilots are comfortable with weather.  
 1940 - Departs Dock to join [redacted] on DZ

2021 - Attempts to call MOJO 69 to inform of WX over DZ Frequency.  
 2021 - 2nd Call to MOJO 69 on DZ Freq



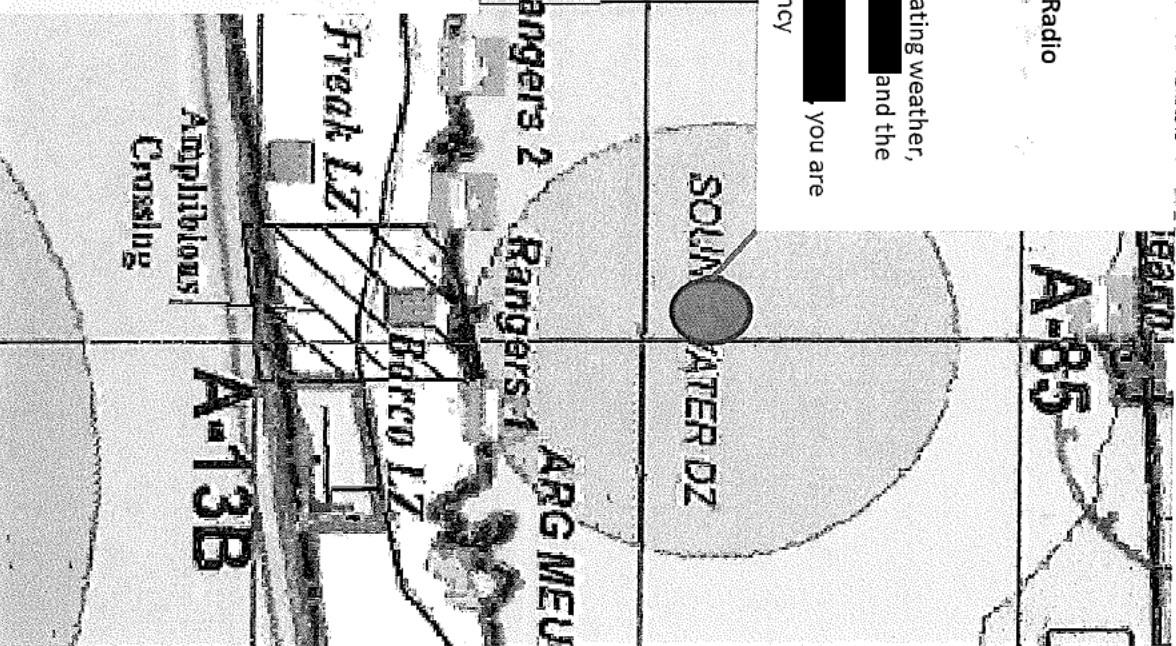
[redacted]

PRC-152/Motorola Light Military Radio  
 1800 - Established at Drop Zone  
 1900 - Sees Fog begin to roll in  
 1926 - Contacts Hurlburt Weather  
 1930 - Advises [redacted] of deteriorating weather, information is relayed to [redacted] and the Aircrew of MOJO 69  
 2022 - Calls "MOJO 69 this is [redacted] you are not clear to drop" over DZ Frequency

Rangers 3  
 Rangers 2  
 Rangers 1

[redacted]

PRC-152/Motorola Light Military Radio  
 -1900 Located with [redacted] and pilots.  
 -1900-1940 Gives [redacted] Motorola who is communicating directly with pilots. Standing next to them during all calls from [redacted] and [redacted] for  
 -1940 Departs with [redacted] for DZ



# RANGE CONTROL COMMUNICATION FLOW

PRC-152/Motorola Light Military Radio

Radio

1900 - Preparing boats, not co-located with aircrew

1930 - Relays all WX calls from DZ to

and Pilots via

Motorola.

1930 - Relays from

who is in direct communication with pilots that the pilots are comfortable with weather.

1940 - Departs Dock to join

on DZ

2021 - Attempts to call MOJO 69 to inform of WX over DZ Frequency.  
2021 - 2nd Call to MOJO 69 on DZ Freq

PRC-152/Motorola Light Military Radio

1800 - Established at Drop zone

1900 - Sees Fog begin to roll in

1926 - Contacts Hurlburt Weather

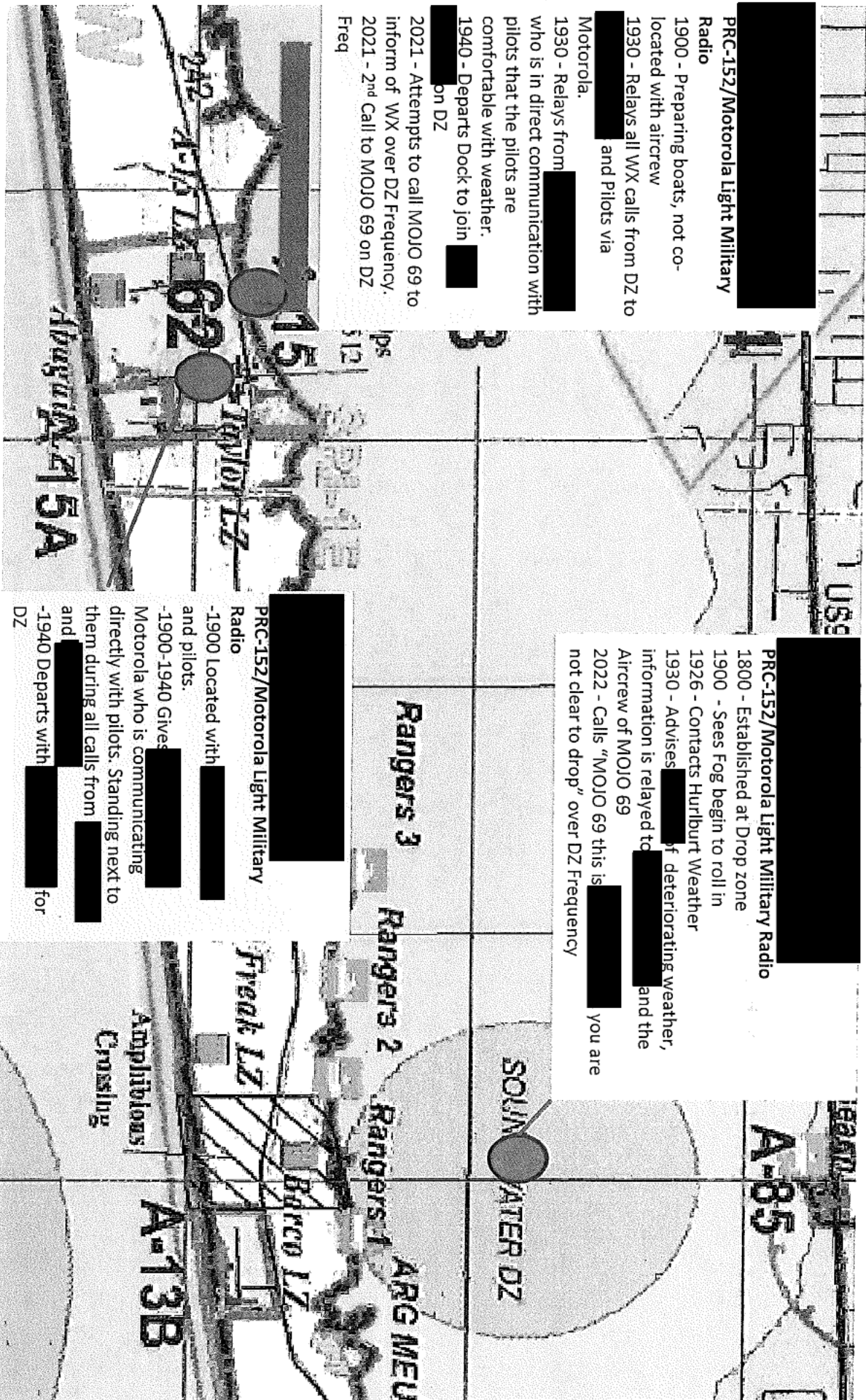
1930 - Advises of deteriorating weather, information is relayed to and the

Aircrew of MOJO 69

2022 - Calls "MOJO 69 this is

not clear to drop" over DZ Frequency

you are



PRC-152/Motorola Light Military Radio

1900 Located with

and pilots.

1900-1940 Gives

Motorola who is communicating

directly with pilots. Standing next to

them during all calls from

and

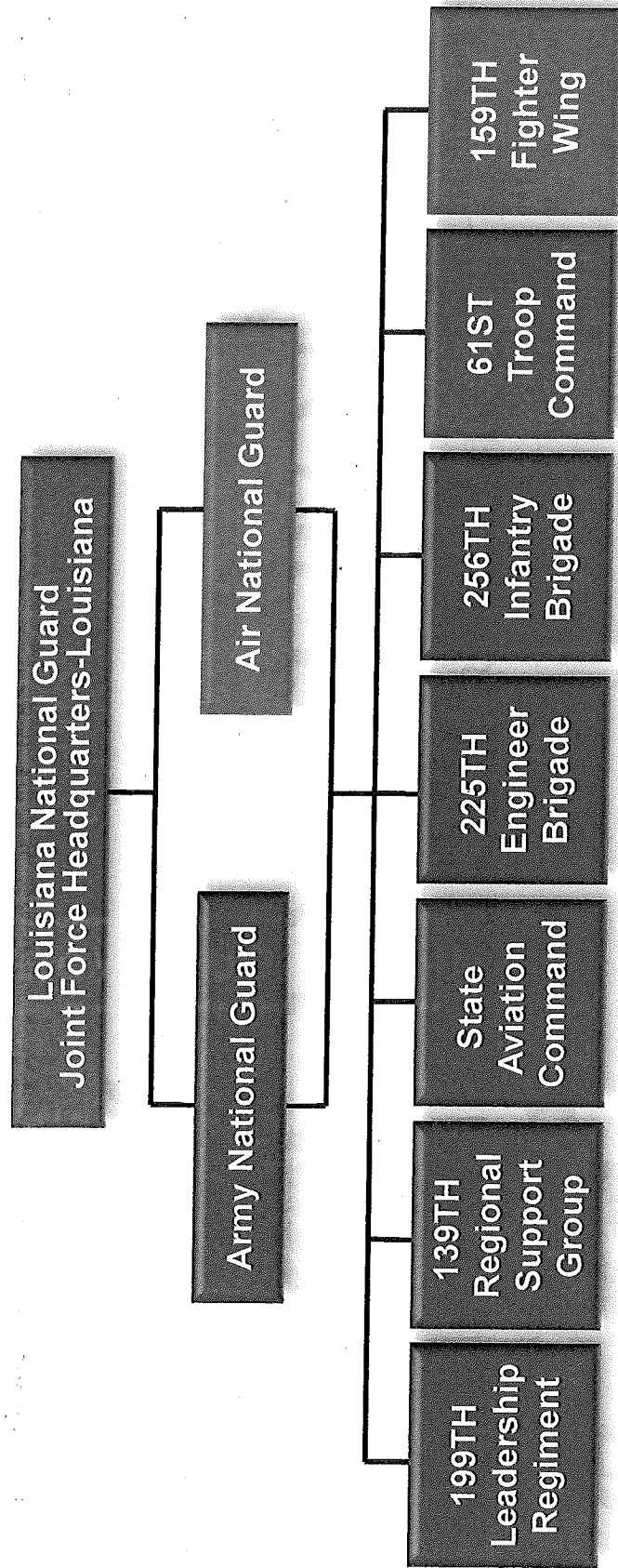
1940 Departs with for

DZ



# PROTECT WHAT MATTERS<sup>SM</sup>

**WHO WE ARE TODAY**



■ Joint

■ Army

■ Air

- 11,000 Soldiers and Airmen
- 146 Army National Guard Units
- 17 Air National Guard Units

State Aviation Command HQ  
(HAMMOND/JACKSON BARRACKS)

AASF1

204th Theater Airfield Operations  
Group (HAMMOND, LA)

AASF2

1-244th (HAMMOND, LA)

2-244th (ESLER AIRFIELD)

HHC 1-244TH

CO A 1-244TH

CO B (-)

DET 1 B CO (-)  
(ESLER FIELD)

D CO

E CO

DET 1 CO D, 2-151ST

DET 1 CO C, 1-114<sup>TH</sup>

DET 1 CO B, 256<sup>TH</sup>  
(FORT POLK)

DET 2 CO B, 248<sup>th</sup>

DET 1 2-244<sup>TH</sup> AOB  
(HAMMOND, LA)

CO F(-), 2-135<sup>th</sup>

DET 5 CO E, 2-135<sup>th</sup>

DET 2 HHC, 2-135<sup>th</sup>

DET 5 CO D, 2-135<sup>th</sup>

\*red bordered boxes indicate unit none organic on BN MTOE\*